



LEFROY BROOKS

1 8 2 8 T R O U T M A N S T R E E T
R I D G E W O O D N E W Y O R K N Y 1 1 3 8 5 U S A
T: +1(718) 302 5292 F: +1(718) 302 4177

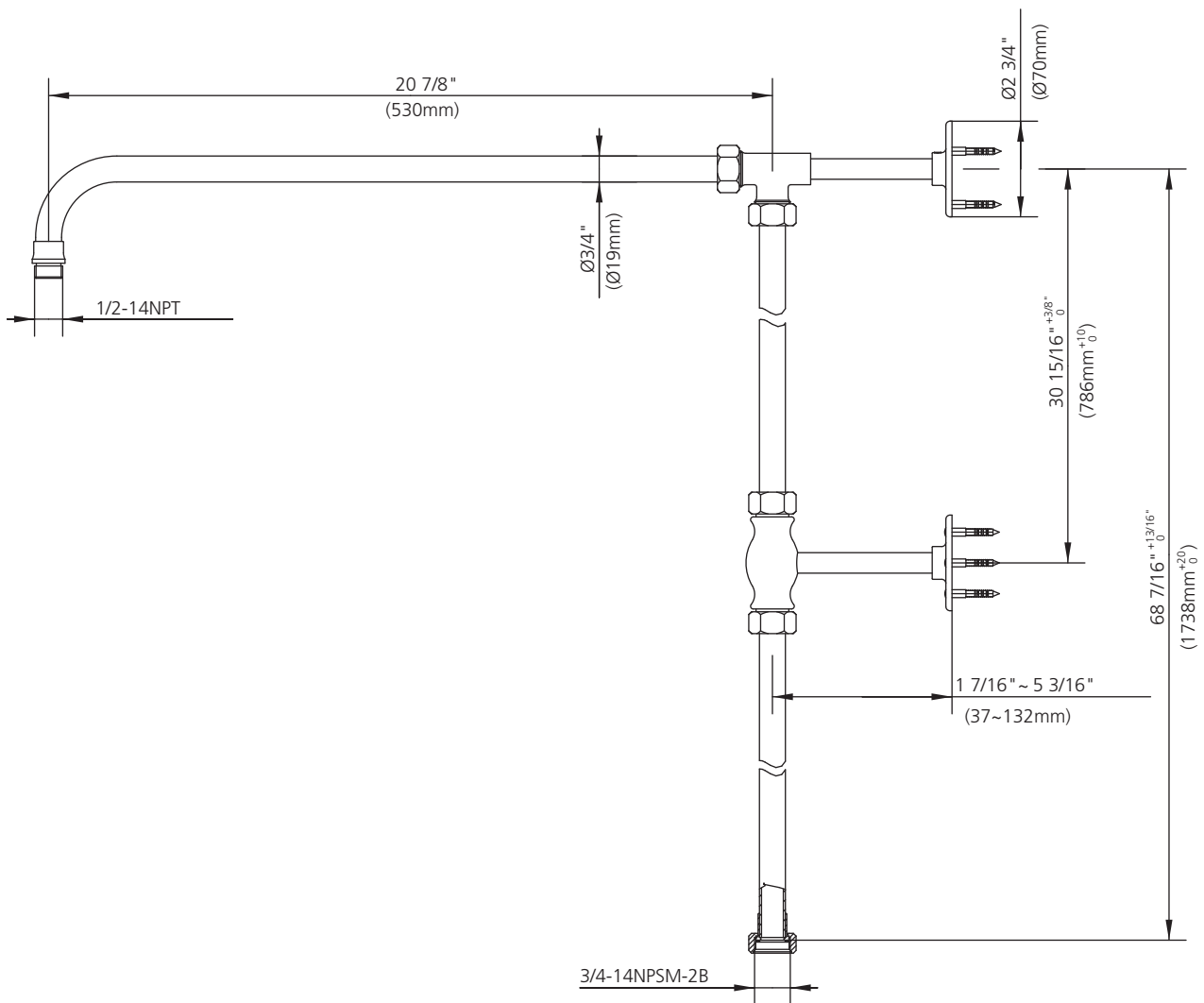
C1-4620

RISER KIT TO SUIT EXPOSED VALVES WITH & WITHOUT BATH SPOUT

DIMENSIONAL DATA SHEET

DATE: 13 January 2012

No: A664245-T



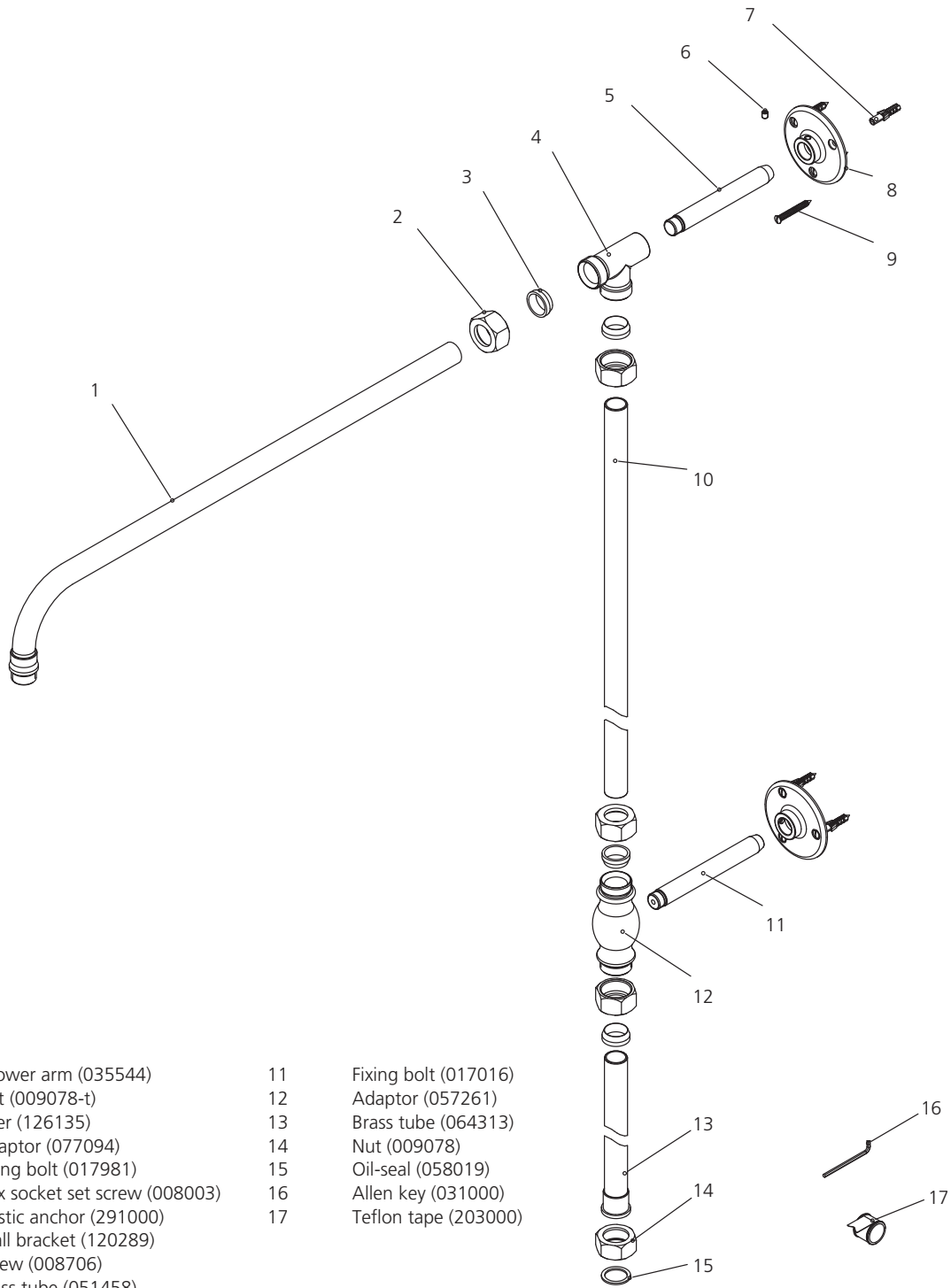
©COPYRIGHT 2009, CHRISTO LEFROY BROOKS. ALL RIGHTS RESERVED.

DIMENSIONS IN INCHES & MILLIMETRES

WHILST EVERY EFFORT IS MADE TO ENSURE THE ACCURACY OF THESE DATA SHEETS THEY ARE SUBJECT TO CHANGE WITHOUT NOTICE AS PART OF THE COMPANY'S PRODUCT DEVELOPMENT PROCESS

C1-4620

RISER KIT TO SUIT EXPOSED VALVES WITH & WITHOUT BATH SPOUT



- | | | | |
|----|-------------------------------|----|----------------------|
| 1 | Shower arm (035544) | 11 | Fixing bolt (017016) |
| 2 | Nut (009078-t) | 12 | Adaptor (057261) |
| 3 | Fixer (126135) | 13 | Brass tube (064313) |
| 4 | Adaptor (077094) | 14 | Nut (009078) |
| 5 | Fixing bolt (017981) | 15 | Oil-seal (058019) |
| 6 | Hex socket set screw (008003) | 16 | Allen key (031000) |
| 7 | Plastic anchor (291000) | 17 | Teflon tape (203000) |
| 8 | Wall bracket (120289) | | |
| 9 | Screw (008706) | | |
| 10 | Brass tube (051458) | | |

Standards

Meets A112.18.1

Please note :

Final achievable flow rate is dependent on the outlets fitted, see relevant outlets (spouts, roses, sprays) for fully assembled product flow rate.