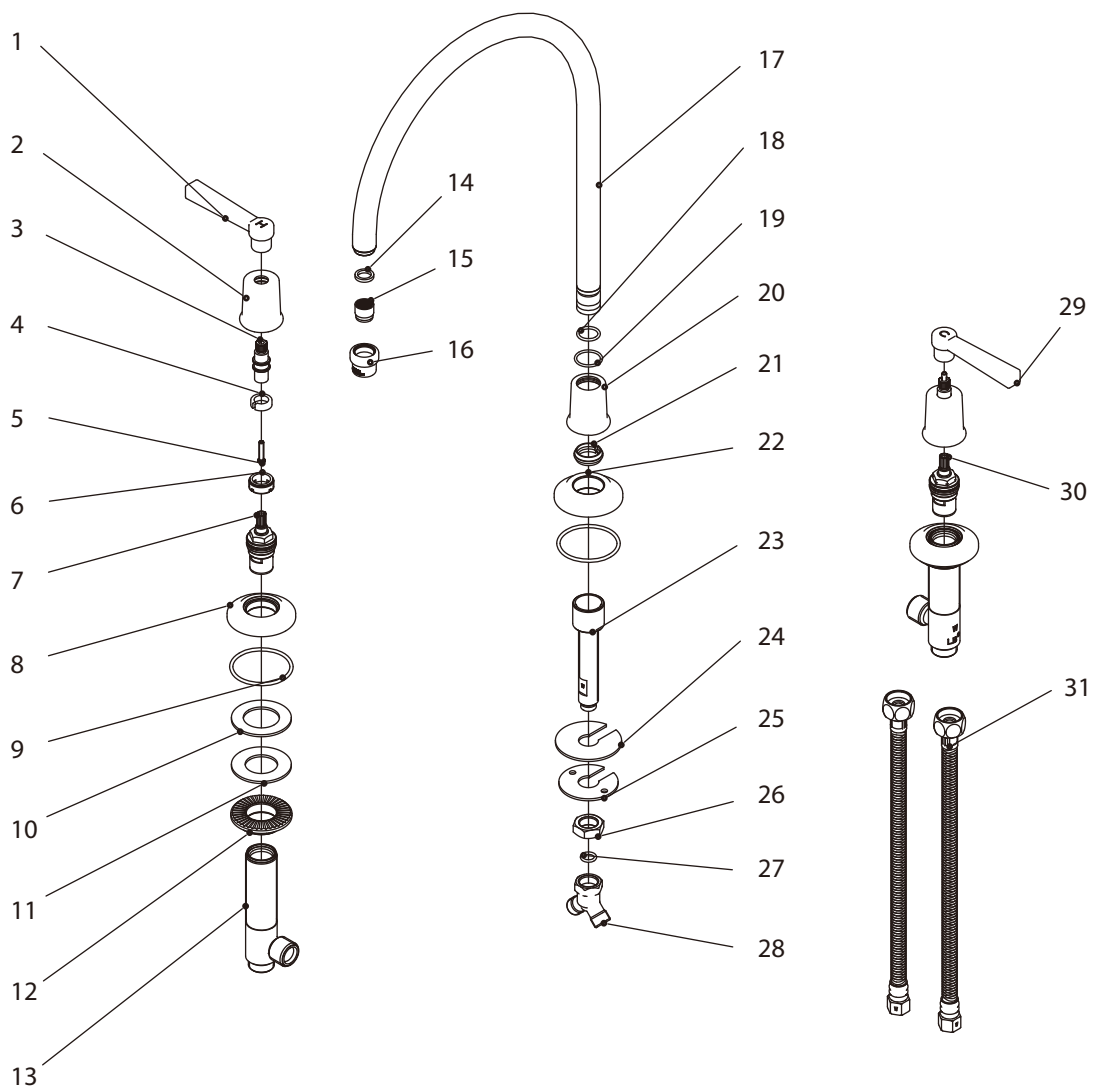


M2-4711

FLEETWOOD LEVER HANDLE 3-HOLE KITCHEN MIXER

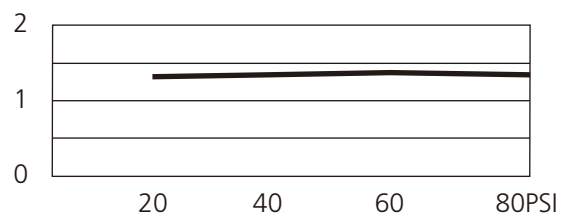


- | | | | | | |
|----|-------------------------|----|-----------------------------|----|---------------------------|
| 1 | Lever (H) (029686H-T) | 12 | Nut (009834) | 23 | Connecting tube (014905W) |
| 2 | Canopy (018295) | 13 | Side body (061893W) | 24 | Oil seal (058094) |
| 3 | Extension rod (110409) | 14 | Oil-seal (010519N) | 25 | Washer (013006) |
| 4 | Clip (012242) | 15 | Aerator insert (553661N) | 26 | Nut (009015) |
| 5 | Screw (008486) | 16 | Aerator housing (305856-54) | 27 | O-ring (004026N) |
| 6 | Adaptor (057507) | 17 | Spout assembly (139349W) | 28 | Connector (015004W) |
| 7 | Cartridge (H) (507175W) | 18 | O-ring (004043N) | 29 | Lever (C) (029686C-T) |
| 8 | Escutcheon (071473) | 19 | O-ring (004109N) | 30 | Cartridge (C) (507176W) |
| 9 | O-ring (004617) | 20 | Canopy (000116) | 31 | Connecting tube (105750W) |
| 10 | Oil seal (010017) | 21 | Clip (012003) | | |
| 11 | Washer (013158) | 22 | Escutcheon (303461) | | |

Standards

IAPMO/cUPC Listed
 Meets NSF 61-9
 Meets A112.18.1
 ADA Compliant

Flow Rate



Please note :

Final achievable flow rate is dependent on the outlets fitted, see relevant outlets (spouts, roses, sprays) for fully assembled product flow rate.