



LEFROY BROOKS

1 8 2 8 T R O U T M A N S T R E E T
R I D G E W O O D N E W Y O R K N Y 1 1 3 8 5 U S A
T: +1(718) 302 5292 F: +1(718) 302 4177

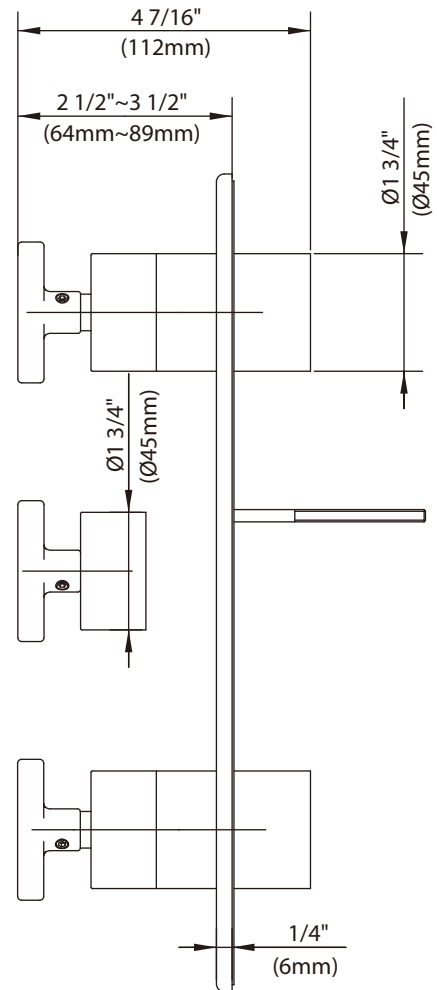
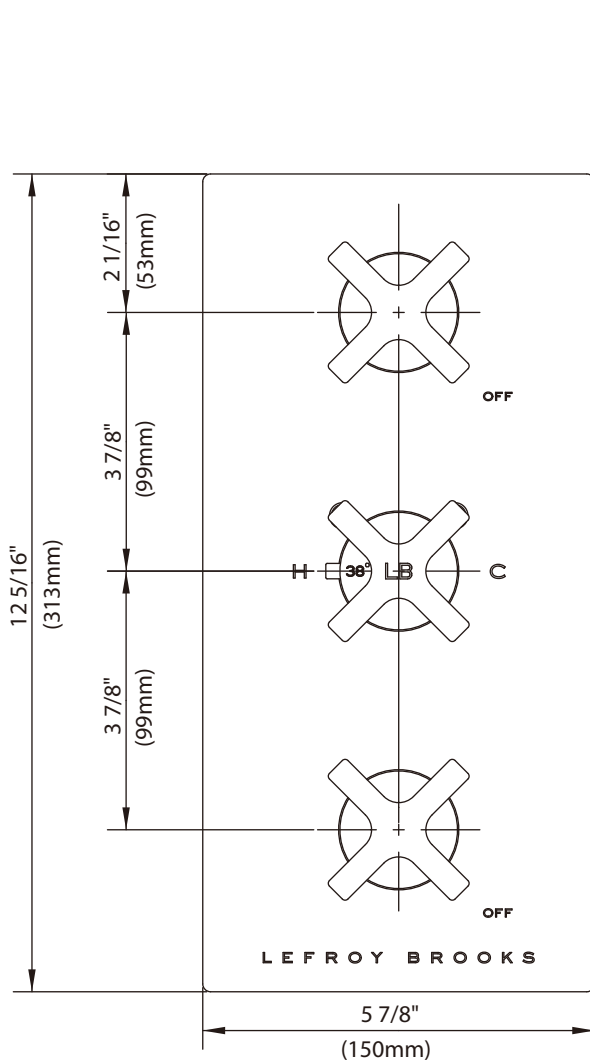
M2-4406

FLEETWOOD CROSS HANDLE THERMOSTATIC WITH TWO CROSS
HANDLE FLOW CONTROLS TRIM ONLY, TO SUIT K1-4202 ROUGH

DIMENSIONAL DATA SHEET

DATE: 16 JULY 2014

No: A66F232



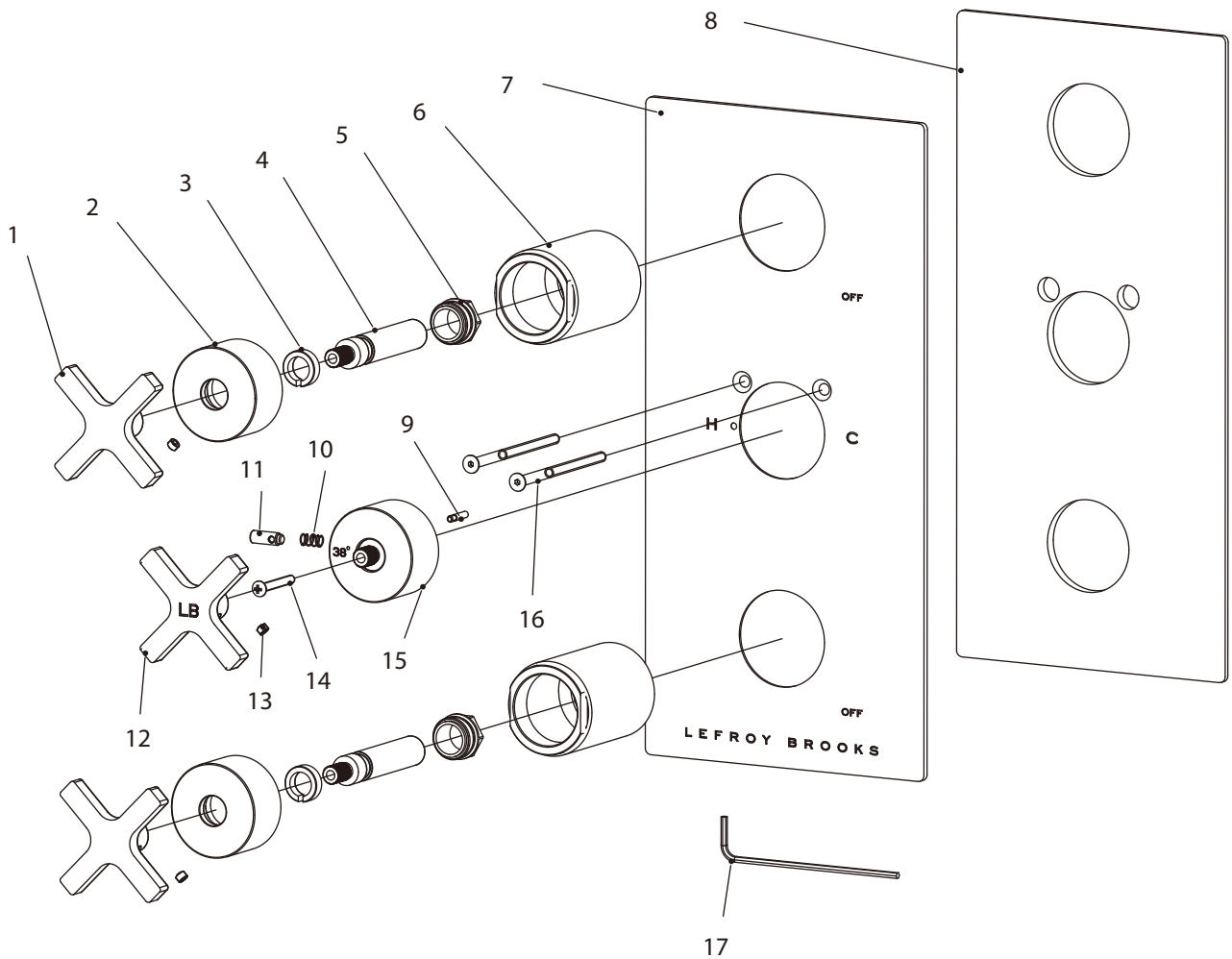
COPYRIGHT © LBIP LTD 2012. ALL RIGHTS RESERVED.

DIMENSIONS IN INCHES & MILLIMETRES

WHILST EVERY EFFORT IS MADE TO ENSURE THE ACCURACY OF THESE DATA SHEETS THEY ARE SUBJECT TO CHANGE WITHOUT NOTICE AS PART OF THE COMPANY'S PRODUCT DEVELOPMENT PROCESS

M2-4406

FLEETWOOD CROSS HANDLE THERMOSTATIC WITH TWO CROSS HANDLE FLOW CONTROLS TRIM ONLY, TO SUIT K1-4202 ROUGH



1	Cross handle (029685)	7	Back plate (006571-51)	13	Set screw (292598)
2	Canopy (018958)	8	Oil seal (068338)	14	Screw (008994)
3	Clip (012242)	9	Pin (003153)	15	Canopy (018421-50)
4	Stem extension (110321)	10	Spring (005157)	16	Screw (008793)
5	Adaptor (067897)	11	Button (036276)	17	Allen key (031220)
6	Sleeve (041724)	12	Cross handle (029685-51)		

Standards

IAPMO/cUPC Listed
Meets A112.18.1

Please note :

Final achievable flow rate is dependent on the outlets fitted, see relevant outlets (spouts, roses, sprays) for fully assembled product flow rate.