



LEFROY BROOKS

1 8 2 8 T R O U T M A N S T R E E T  
R I D G E W O O D N E W Y O R K N Y 1 1 3 8 5 U S A  
T: +1(718) 302 5292 F: +1(718) 302 4177

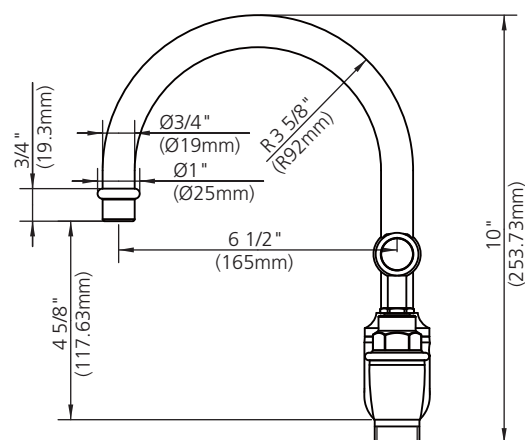
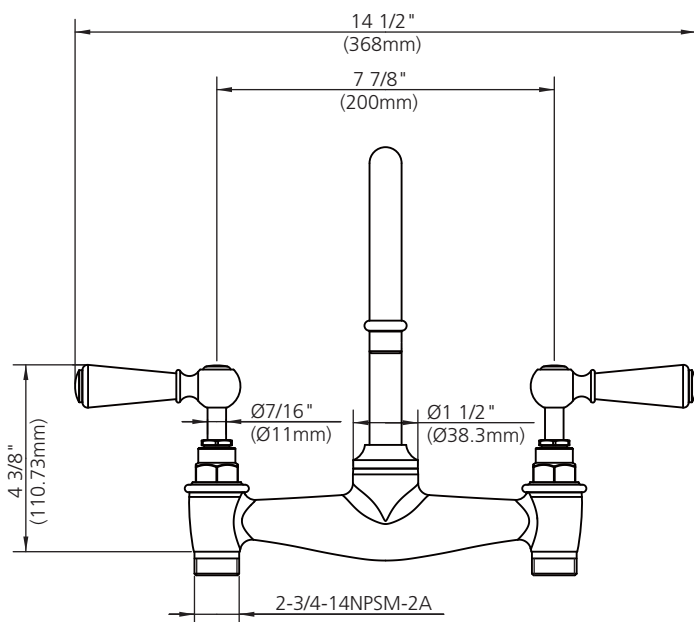
CW-1110 (WL9007)

WHITE LEVER BASIN BRIDGE MIXER WITH 6 1/2" SPOUT

DIMENSIONAL DATA SHEET

DATE: 2 January 2012

No: A66F212W

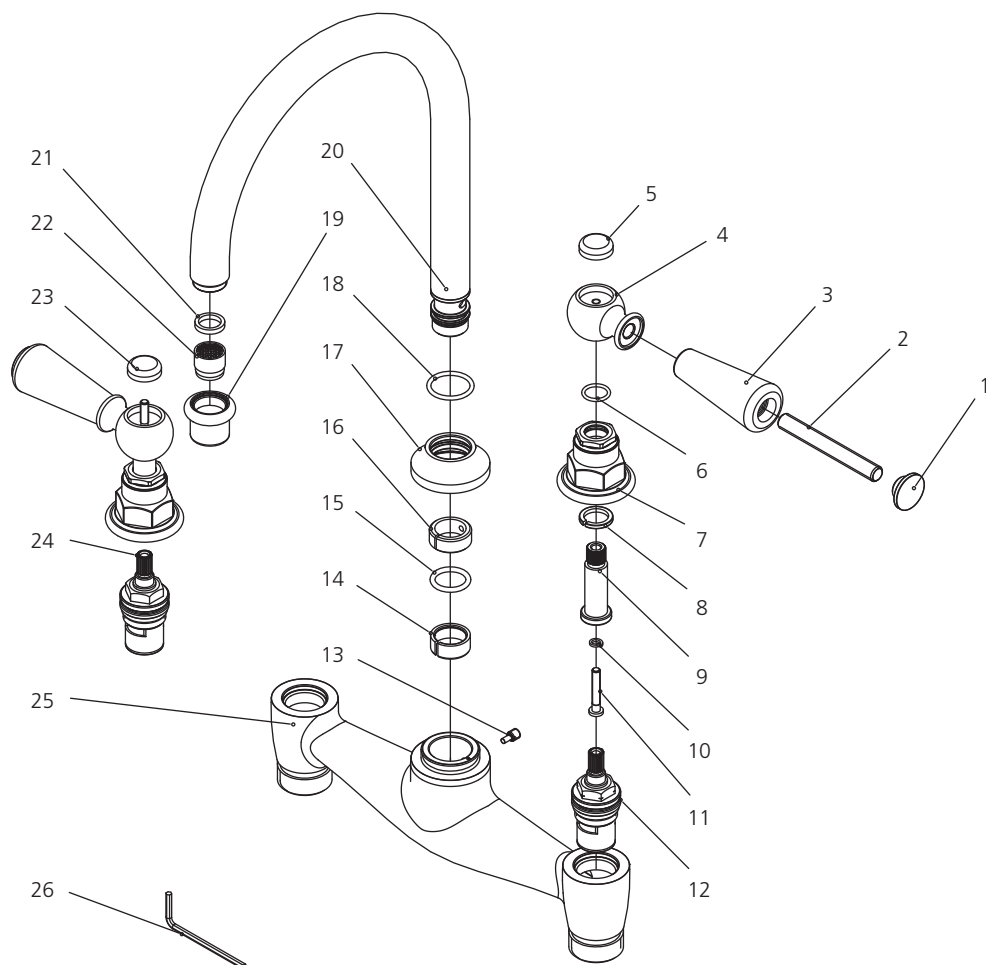


DIMENSIONS IN INCHES & MILLIMETRES

WHILST EVERY EFFORT IS MADE TO ENSURE THE ACCURACY OF THESE DATA SHEETS THEY ARE SUBJECT TO CHANGE WITHOUT NOTICE AS PART OF THE COMPANY'S PRODUCT DEVELOPMENT PROCESS

# CW-1110 (WL9007)

WHITE LEVER BASIN BRIDGE MIXER WITH 6 1/2" SPOUT

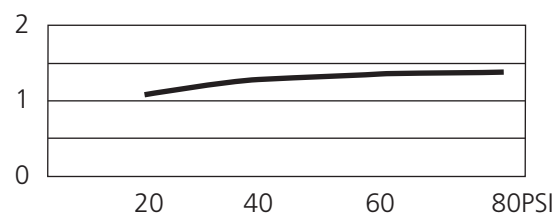


1	Handle-end cap (109376)	12	Cartridge (C) (507176W)	23	Ceramic indices (H) (129313H)
2	Handle stem (017094)	13	Screw (008252)	24	Cartridge (H) (507175W)
3	Handle sleeve (108924)	14	Clip (012112N)	25	Body (002678W)
4	Adaptor (205144)	15	O-ring (004005N)	26	Allen key (031000)
5	Ceramic indices (C) (129313C)	16	Clip (012060)		
6	O-ring (048085N)	17	Adaptor (018227)		
7	Canopy (018253)	18	O-ring (063066N)		
8	Clip (012255)	19	Aerator housing (305849N-54)		
9	Stem extension (110461)	20	Spout assembly (139863W)		
10	Washer (013570)	21	Oil-seal (010519N)		
11	Screw (008670)	22	Aerator insert (553661N)		

## Standards

IAPMO/cUPC Listed  
Meets NSF 61-9  
Meets A112.18.1

## Flow Rate



Please note :

Final achievable flow rate is dependent on the outlets fitted, see relevant outlets (spouts, roses, sprays) for fully assembled product flow rate.