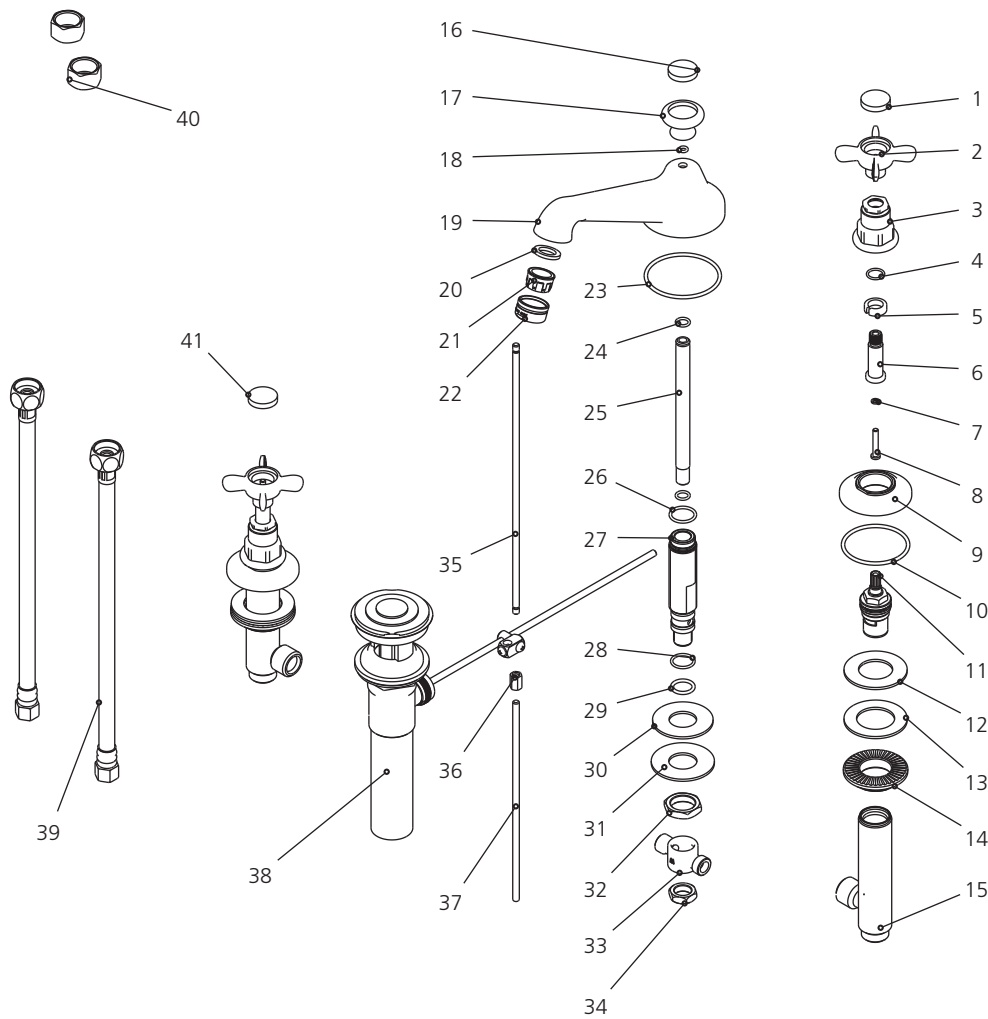


C1-1049 (LB1220)

CROSS HANDLE 3-HOLE BASIN MIXER WITH POP-UP WASTE

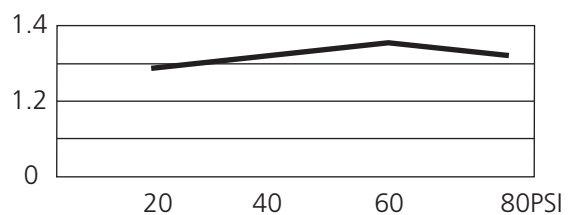


1	Ceramic cap (129312C)	15	Side body (061893W)	29	O-ring (004005N)
2	Handle (029721-T)	16	Ceramic cap (129312-50)	30	Washer (060041)
3	Canopy (018220)	17	Pop-up knob (124408)	31	Washer (013202)
4	O-ring (048085)	18	O-ring (048044)	32	Nut (009009)
5	Clip (012242)	19	Spout (002695W)	33	Connector (015001W)
6	Stem extension (110461)	20	Oil-seal (010018N)	34	Nut (009002)
7	Washer (013570)	21	Aerator insert (553639N)	35	Pop-up rod (125412)
8	Screw (008670)	22	Aerator housing (305680N-51)	36	Adaptor (077125)
9	Escutcheon (215486)	23	O-ring (072022)	37	Pop-up rod (110041)
10	O-ring (004627)	24	O-ring (004001N)	38	Pop-up sub-assembly (556781)
11	Cartridge (507907W)	25	Steel tube (051559)	39	Flexible hose (105750W)
12	Washer (013158)	26	O-ring (004043N)	40	Copper nut (504003)
13	Oil-seal (010017)	27	Connecting tube (014016W)	41	Ceramic cap (129312H)
14	Nut (009834)	28	O-ring (004115N)		

Standards

IAPMO/cUPC Listed
Meets NSF 61-9
Meets A112.18.1

Flow Rate



Please note :

Final achievable flow rate is dependent on the outlets fitted, see relevant outlets (spouts, roses, sprays) for fully assembled product flow rate.