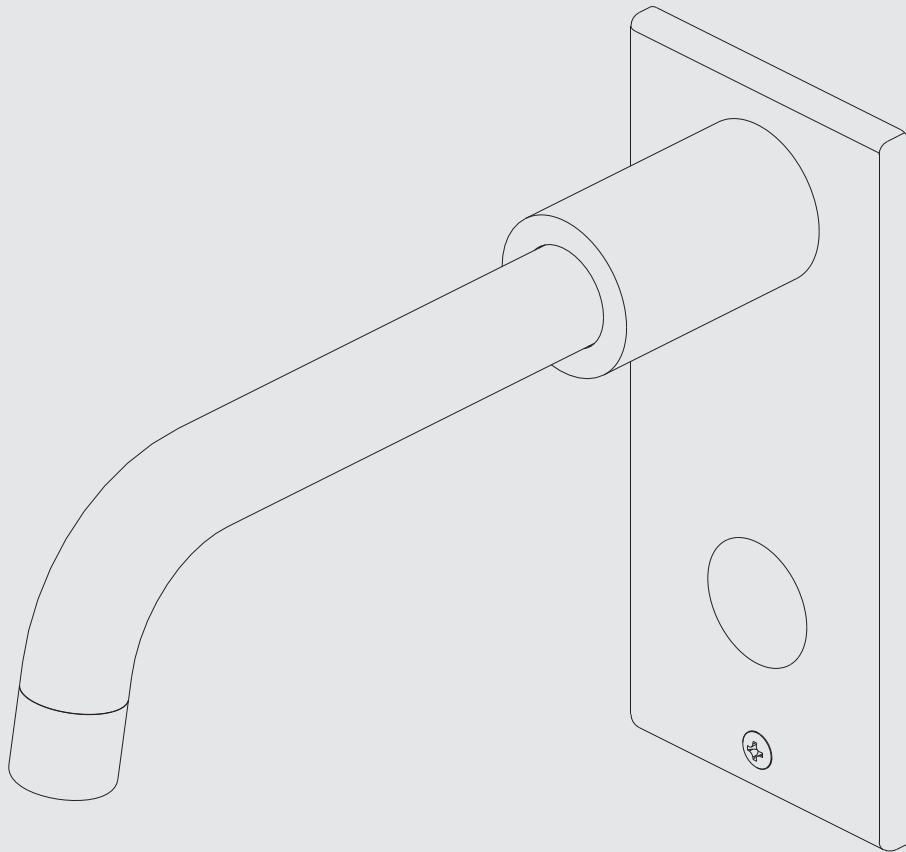




INSTALLATION, OPERATING & MAINTENANCE INSTRUCTIONS

K1-1301

WALL HANDS-FREE ELECTRONIC BASIN FAUCET

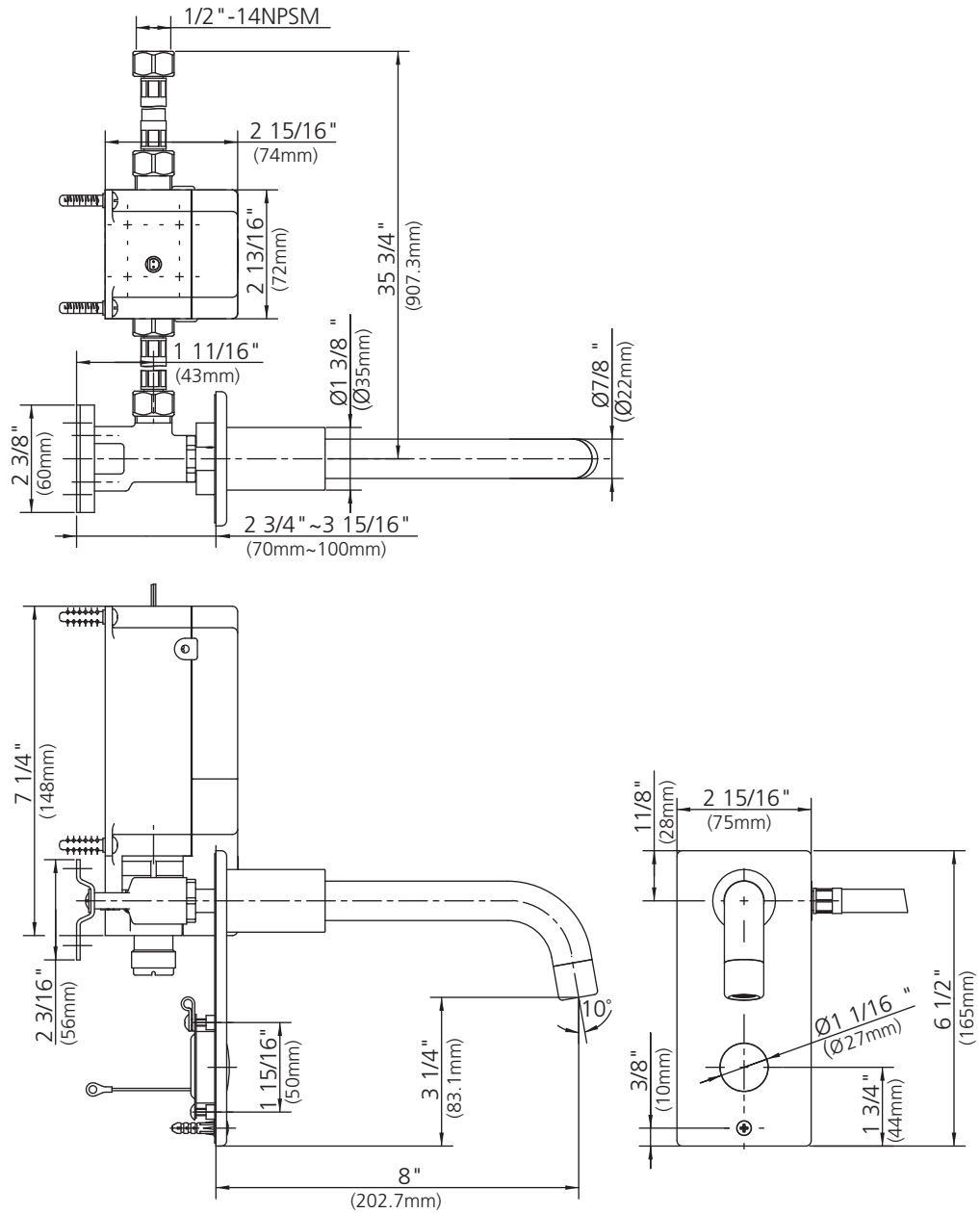


LEFROY BROOKS

Contents

Dimensions	3
Sensor Information and Adjustment Procedure	4
Installation Procedure	5
Parts List	7
Fault Finder	8
Safety Tips, Care and Maintenance	9
Guarantee	10

Dimensions in Inches (& Millimetres)



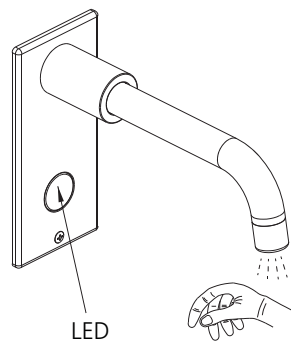
Whilst every effort is made to ensure accuracy, design and dimensions are subject to change without notice as part of the company's product development process.

Sensor Power On Procedure

Please read this section carefully and make sure you understand before beginning the installation.

1. The optimum detective range has been set up already. In normal circumstances, there is no need to set or adjust it again.
2. Before connecting the power supply and using sensor, keep the area in front, the area surrounding the faucet and the sensor clear to make sure there is no unexpected detection.
3. When ready to connect power supply (Installation step-6), please make sure the following steps are implemented for sensor. This will allow you to use the sensor smoothly and normally.

6 seconds after power supply is connected ---> LED light on for another 6 seconds ---> LED light off ---> normal function.



4. In case you need to adjust detective range for particular circumstance, please refer to another chapter - Detective Range Adjust Procedure.

Detective Range Adjust Procedure

Please read this section carefully and make sure you understand before beginning the installation.

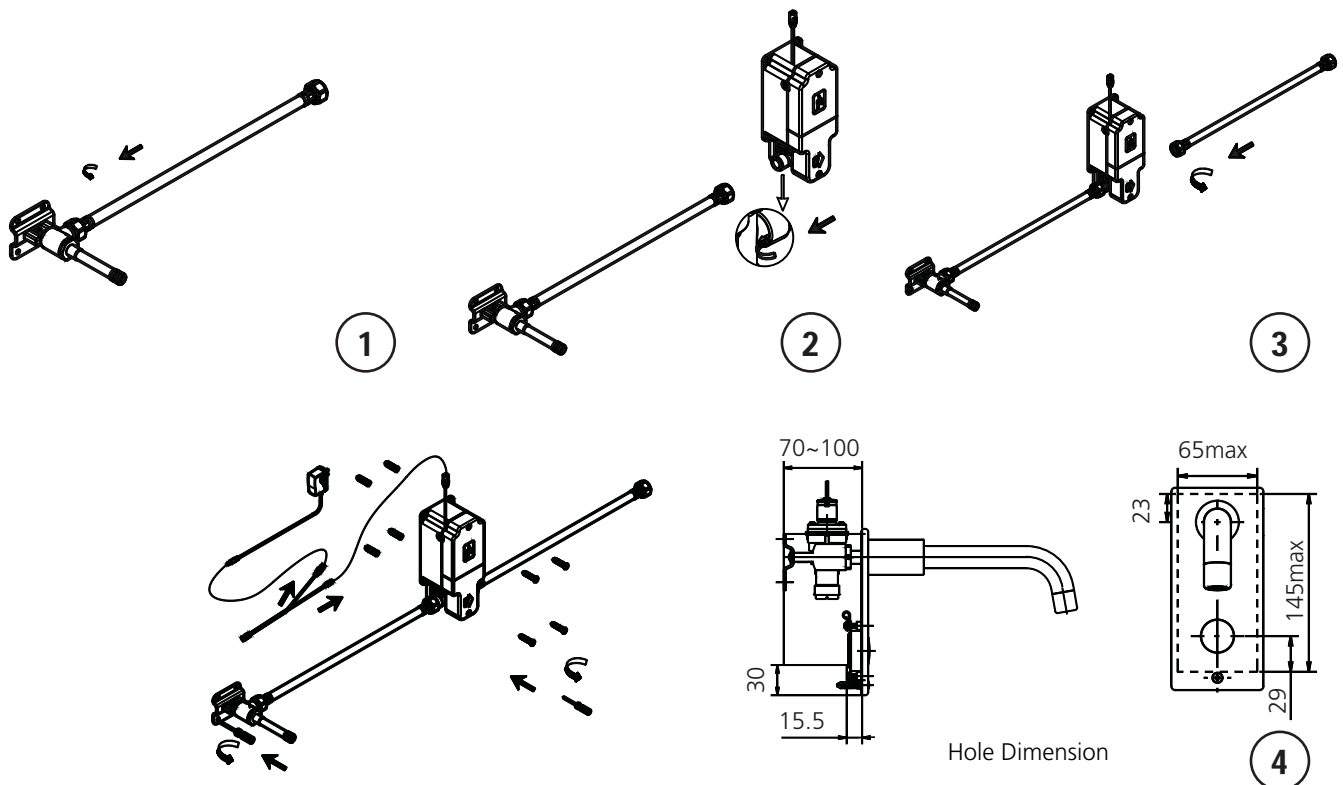
1. Firstly, implement the sensor power on procedure steps 1~2.
2. When ready to connect power supply (Installation step-6), please make sure the following steps are implemented for sensor. This will allow you to use the sensor smoothly and normally.

Within 6 seconds after power supply is connected, place still hand at the desired location in front of sensor until LED light on--> LED light flashes 3 times--> LED light off--> normal function.

Installation Procedure

Steps 1-4

Lefroy Brooks always recommends that plumbing products be installed by a licensed professional. Shut off main water supply before installation.



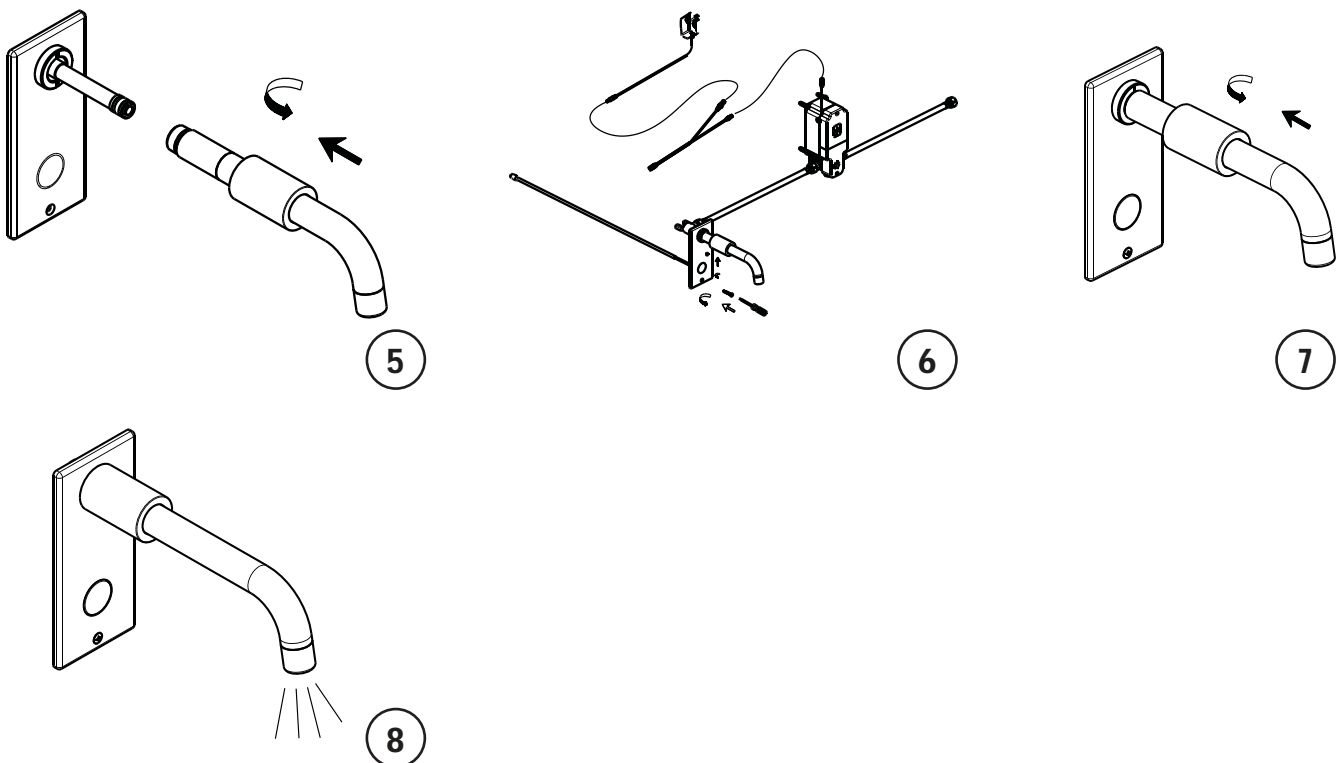
- 1 Connect flexible hose to rough inlet.
- 2 Connect Flexible Hose to solenoid valve. Please make sure that you connect to the correct end of solenoid valve which is with marks of arrow at the two ends points the flow direction.
- 3 Connect another Flexible Hose 3 to solenoid valve.
- 4 Turn on water valve to remove any leftover debris. Then turn off water valve and connect the flexible hose to water supply. Install the protective box onto wall.

Connect connection cable assembly (2 pin, male) to the lead from solenoid valve (2 pin, female).

Connect power supply wire from AC Adaptor to connection cable assembly. Plug AC adaptor to power supply. (Assuming power supply is inside the cave)

Install rough assembly to wall with screws. Leave cable assembly (4 pin, female) outside the cave temporarily for connecting with the lead from Sensor Module in further step.

Lefroy Brooks always recommends that plumbing products be installed by a licensed professional. Shut off main water supply before installation.



5 Connect spout to front panel.

6 Connect connection cable assembly (4 pin, female) to the lead from sensor module.

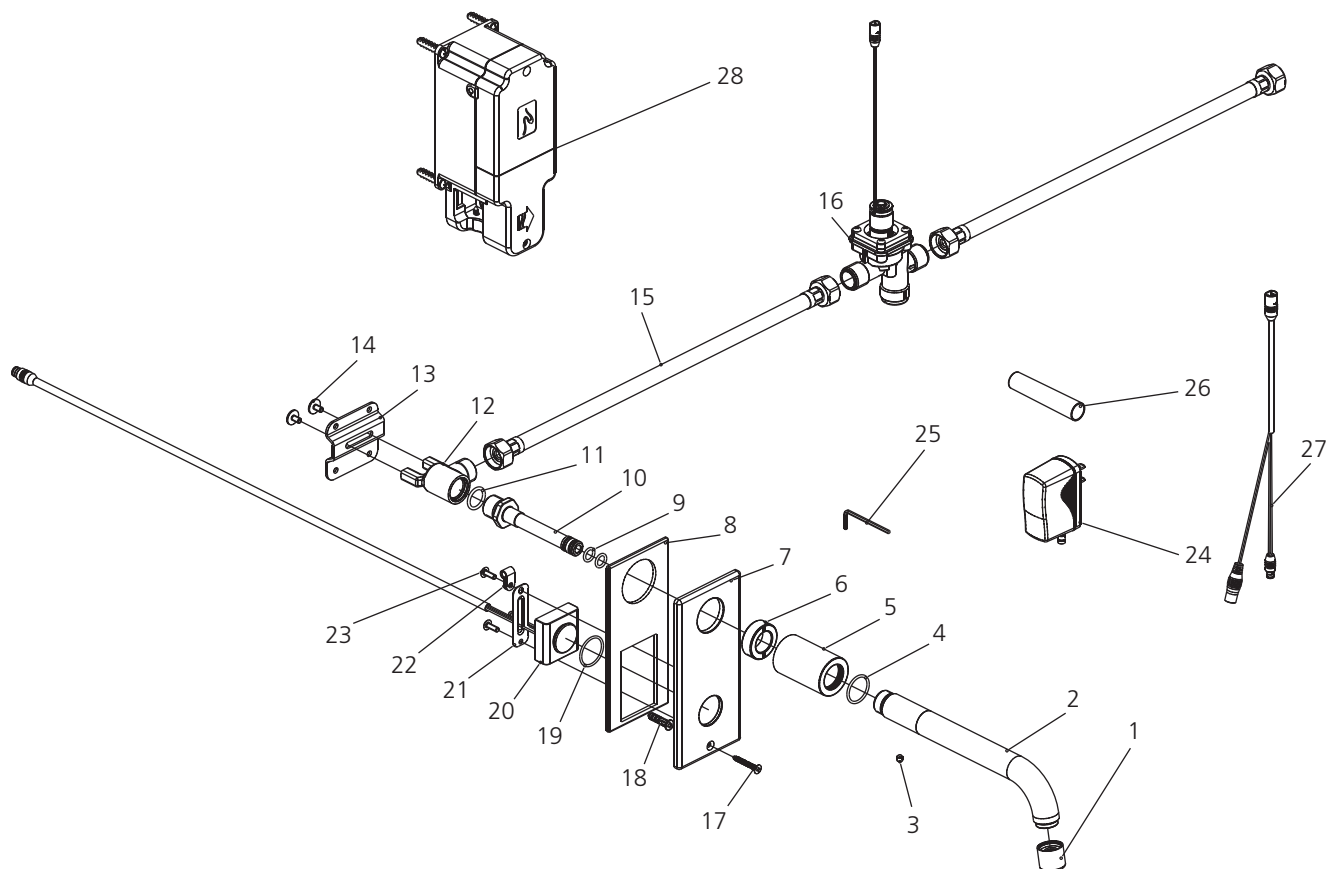
Refer to the chapter - 'Sensor power on procedure' (page 4) and carry out these steps otherwise the detective range may be influenced by any unexpected detection.

Install front panel and spout assembly to connection tube from rough. Please make sure that all connections are put in order inside cave to prevent front panel from pressing any connection.

Fix front panel with screws, and fix spout with set screw.

7 Fix canopy in place.

8 Finish installation.



- | | | | | | |
|----|----------------------------|----|-----------------------------|----|-----------------------------------|
| 1 | Aerator assembly (500951N) | 11 | O-ring (004010N) | 21 | Fixing plate (120282) |
| 2 | Spout assembly (139646W) | 12 | Body (002629W) | 22 | Cable P-clip (540286) |
| 3 | Set screw (008198) | 13 | Fixing plate (120283) | 23 | Screw (008063) |
| 4 | O-ring (004007) | 14 | Screw (008013) | 24 | Plug-in adaptor (540484) |
| 5 | Canopy (018965) | 15 | Flexible hose (105540N) | 25 | Allen wrench (031000) |
| 6 | Adaptor (067461) | 16 | Solenoid valve (540082N) | 26 | Protective cap (045160) |
| 7 | Front panel (007641) | 17 | Screw (292615) | 27 | Connetion cable assembly (540373) |
| 8 | Seal (010947) | 18 | Fixing anchor bolt (291001) | 28 | Protective box assembly (A66G020) |
| 9 | O-ring (004026N) | 19 | O-ring (004006N) | | |
| 10 | Connection tube (039443W) | 20 | Sensor module (546112) | | |

Fault Finder

Fault	Cause	Rectification
Aerator (1) leaks or has an inconsistent water flow pattern.	Aerator (1) is dirty or misfitted.	Unscrew the aerator (1) to check rubber packing. Re-assemble the aerator.
Sensor does not response and red light is continuously on when the Sensor Power On Procedure is implemented	There is some unexpected object within detective scope.	Check if any unexpected object in the detective scope and remove it Such as tools, mirror ... and so on.
Before power supply is connected, the water flows continuously when the water valve is turned on.	Plunger of solenoid valve should keep closed when sensor is not detecting. The plunger may be accidentally opened due to being shook in transportation.	See installation procedures to connect connection cable assembly well and power supply. As soon as the power is connected, the solenoid valve will close the plunger itself.
Sensor is connected with solenoid valve and power supply. When the water valve is turned on, the water flows continuously without object within the detection range.	The plunger of solenoid valve keeps open abnormally because it is obstruct by debris or faulty Sensor.	Firstly change a new solenoid valve. If the water still flows continuously, then change a new sensor.
The default detection range is not desirable for your use.	The default detection range maybe not satisfied for some particular circumstance.	Please refer to the section – Detective Range Adjust Procedure. (page 4)

Safety Tips, Care and Maintenance

Safety Tips

If you are soldering during faucet installation, remove cartridges, seats, gaskets and washers prior to applying flame, otherwise you will void the warranty.

Cover drain openings to avoid losing small parts.

When cutting or soldering pipe, use safety glasses to protect your eyes.

Important Points

Prior to beginning installation. turn off the cold and hot water lines and open the old faucet to release built-up pressure.

Overtightening nuts may cause damage.

Wrap all threaded connections with pipe tape available at your local plumbing supply store. Always wrap in a clockwise direction. The fittings should be installed by a state-licensed plumber.

Please note:

When there is a difference in water pressure between hot and cold supplies to the mixing valve, the pressures should be equalized by a plumber in accordance with best practice and legislation.

Maintenance

Your new bathroom faucet is designed for years of trouble-free performance. Keep it looking new by cleaning it periodically with a soft cloth. Avoid abrasive cleaners, wire wool and harsh chemicals as these will dull the finish and void your warranty.

Routine Maintenance

The frequency and extent of attention required will vary according to prevailing site and operational conditions, however a 12 monthly maintenance schedule is recommended.

If the product has operated satisfactorily for some time, but performance has been degraded, please check the Fault Finder section to identify the problem.

Maintenance Check List

- Worn or damaged seals and washers
- Damaged seal faces
- Thread wear
- Incorrect adjustment
- Component failure
- Debris or limescale build-up

Guarantee

Guarantee of Quality

This product is guaranteed against faulty materials and workmanship for 12 months from date of purchase. For the guarantee to be valid, the unit must be installed by a competent person, in accordance with the instruction booklet.

Any part found to be defective during the guarantee period, will (at our option) be repaired or replaced, free of charge, provided the unit has been installed, and properly used in accordance with the instruction booklet.

Our products correspond to the valid technical and water supply standards as well as the relevant approvals requirements. We guarantee them to be free of design and production faults at the time of delivery and that with correct use and care in accordance with our printed instructions they will function reliably.

Guarantee period

- The guarantee is valid in private homes for 5 years from the purchase date. Proof of purchase has to be provided when making a guarantee claim.
- By use in commercial or institutional applications the guarantee is valid for 1 year after first use.

To make a guarantee claim, proof of purchase or, the beginning of use is required.

Not Covered by this Guarantee

Damage or defects arising from incorrect installation, improper use or lack of maintenance.
Installed product damaged in transit
Consequential loss, damage or product removal and installation costs.

Lefroy Brooks is not responsible for any on site labour charges.

For additional assistance or service call

718-302-5292

9am to 5pm EST Monday to Friday



L E F R O Y B R O O K S

www.lefroybrooks.com

LEFROY BROOKS INC, 1828 TROUTMAN STREET, RIDGEWOOD, NY, 11385
TELEPHONE: 718-302-5292. FAX: 718-302-4177

The use of trademarks, product design and artwork is subject to licence or agreement with Christo A. Lefroy Brooks. The design registrations, trademark registrations and copyrights are protected by law and the use or reproduction outside the terms of an agreement is prohibited. The right to modify designs and dimensions is reserved. Christo Lefroy Brooks is a member of ACID (Anti Copying in Design).

COPYRIGHT©LBIP LTD 2014